

Overviews and Objectives

Main Objective

Provide auditor's with a windows based application that allows them to create and print their work itinerary/time sheet, also to provide a Windows CE version of the application to sync to the Windows application (Ideal to have a palm OS version as well).

Significance

Auditors must fill out an itinerary each week. Some fill it out two weeks at a time or once a month or everyday depending out what they are doing. Auditors must also fill out a time sheet for production reports that we do every month. The system we have now forces the auditor to fill his or her itinerary and time sheet out separately. The system is also a command line system that nobody likes and dreads using.

Detailed Objectives

Auditor

1. Create, update, and print time sheet/itinerary locally
2. Ability to query time data by auditor name, specific date, or range of dates
3. Ability to view schedule by day, week, or month
4. All information entered on PDA should update local application on computer
5. All local information entered will be updated to server

Supervisor

1. All functions of an Auditor
2. Ability to see all auditors that they supervise
3. Ability to see individual auditors they supervise
4. Ability to print individual and summary reports

Georgia Department of Revenue
Compliance Division
Auditor Time Sheet/Itinerary

Detail Development Requirements

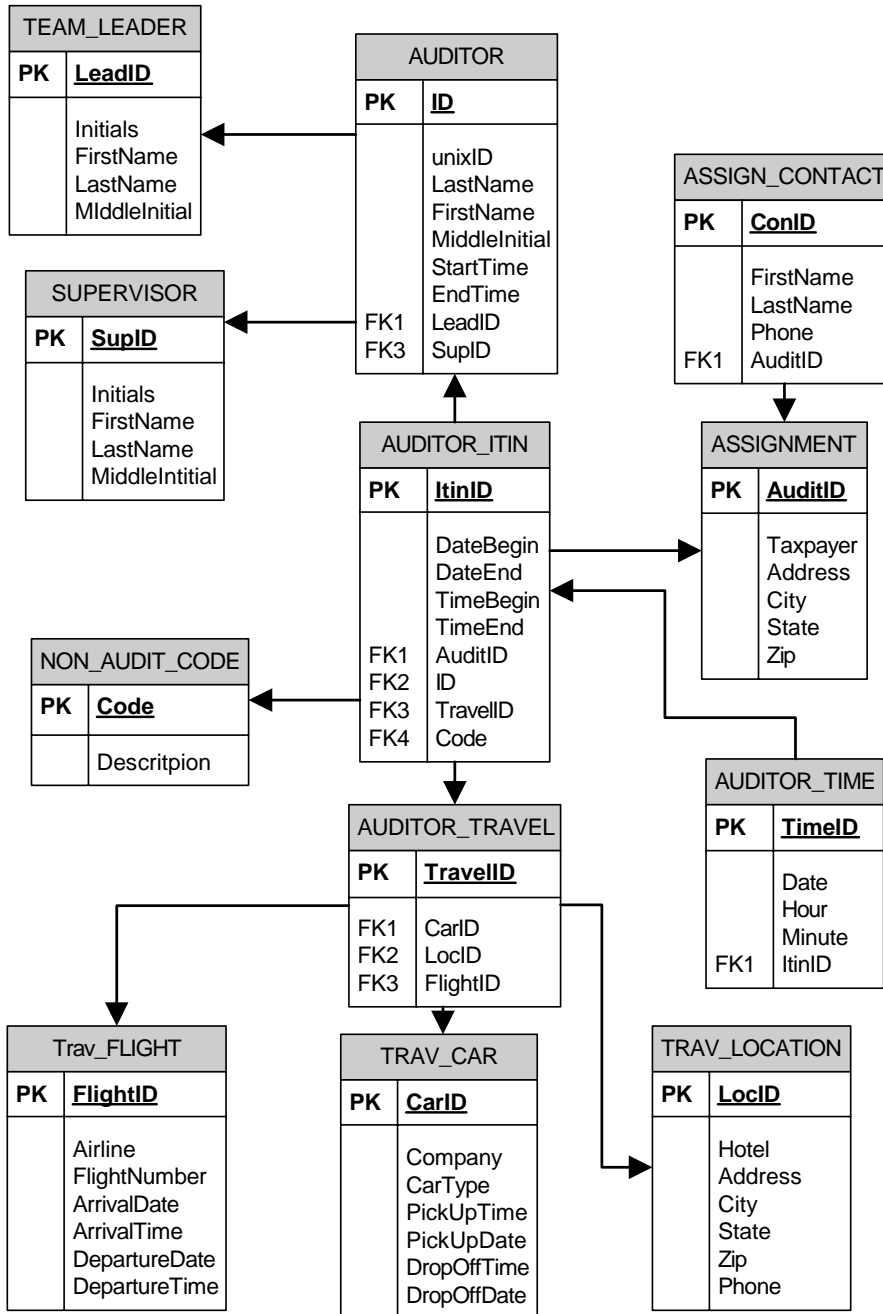
- Application must be thoroughly documented
 - Updated ERD Model
 - Which file does what function
- Code must be commented
- Use functions and stored procedures whenever possible
- Adequate white space
- Variable names must be descriptive
- C# is preferred but any .NET language will suffice

Detail Database Requirements

- SQL Server 2000 optimal
- Access is doable and we will convert to SQL

Georgia Department of Revenue
Compliance Division
Auditor Time Sheet/Itinerary

Auditor TimeSheet/Itinerary ERD Model



Georgia Department of Revenue
Compliance Division
Auditor Time Sheet/Itinerary

Tables

Static Data

- AUDITOR -- Basically local user information
- SUPERVISOR – Static list of the Audit Supervisors
- TEAM_LEADER – Static list of the Audit team leaders
- NON_AUDIT_CODE – Static list of descriptions that pertain to the work being done
- ASSIGNMENT – List of assignments belonging to the auditor. Updated every time a new assignment is made
- ASSIGN_CONTACT – Auditors list of contacts for each assignment

Input Data

- AUDITOR_TIME – Driving table behind the time sheet application
- AUDITOR_TRAVEL – Driving table behind travel information
- TRAV_FLIGHT – Holds auditor flight information
- TRAV_CAR – Holds auditor car rental information
- TRAV_LOCATION – Holds auditor hotel information